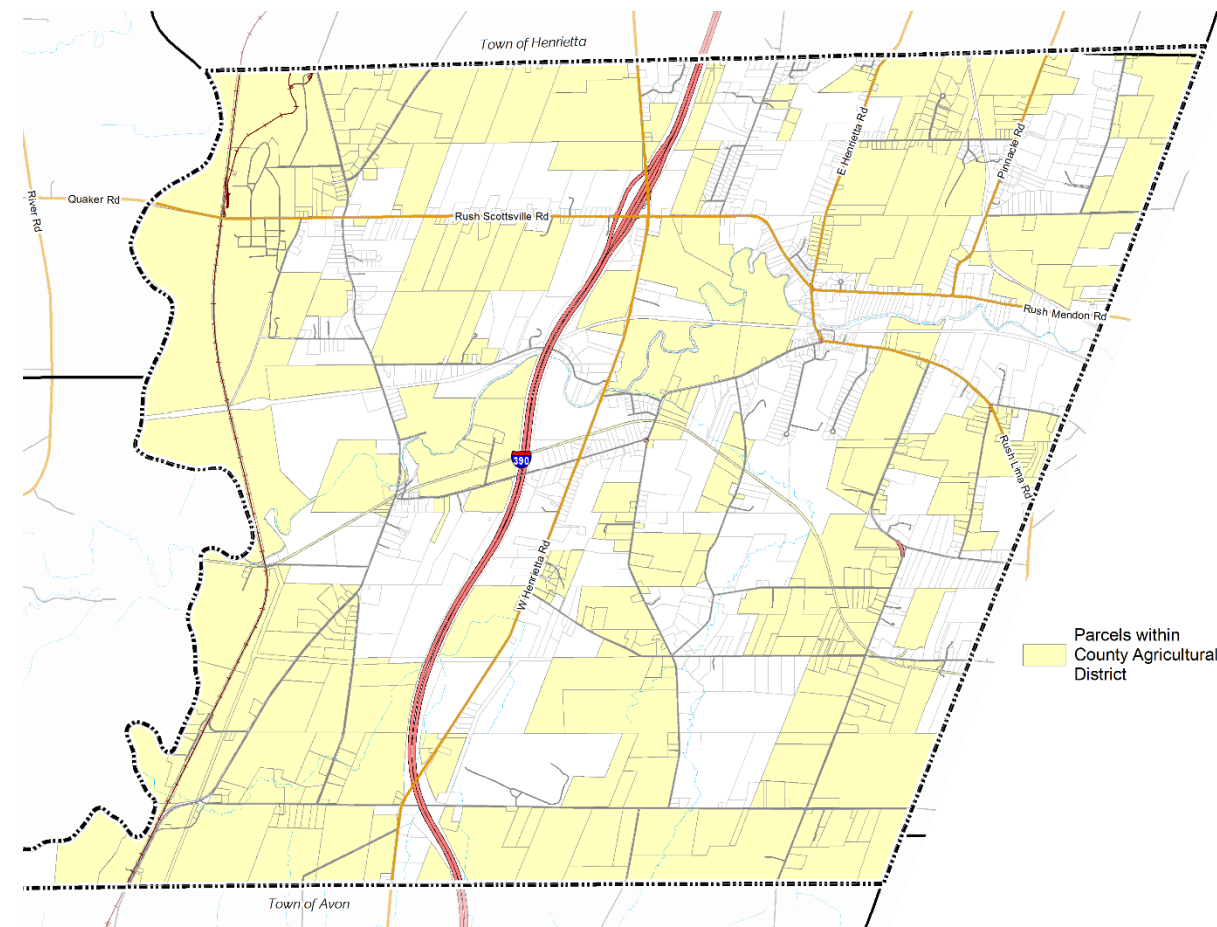


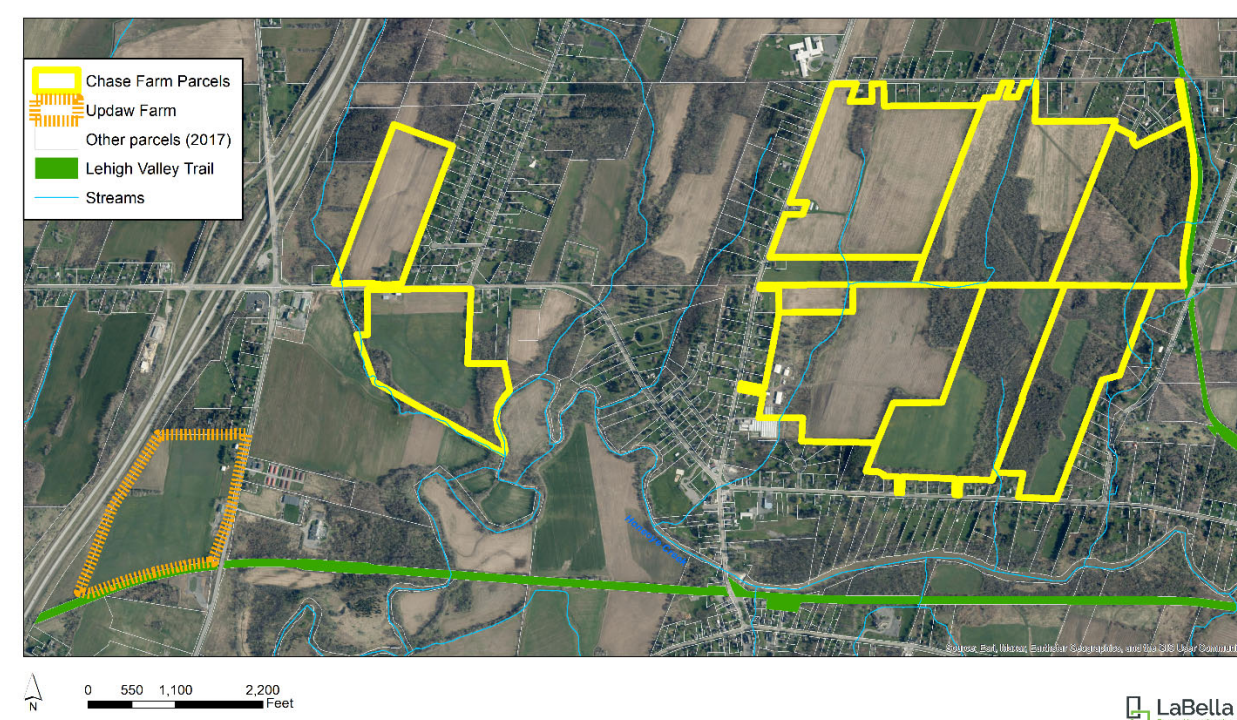
AGRICULTURE & FARMLAND

Current Conditions

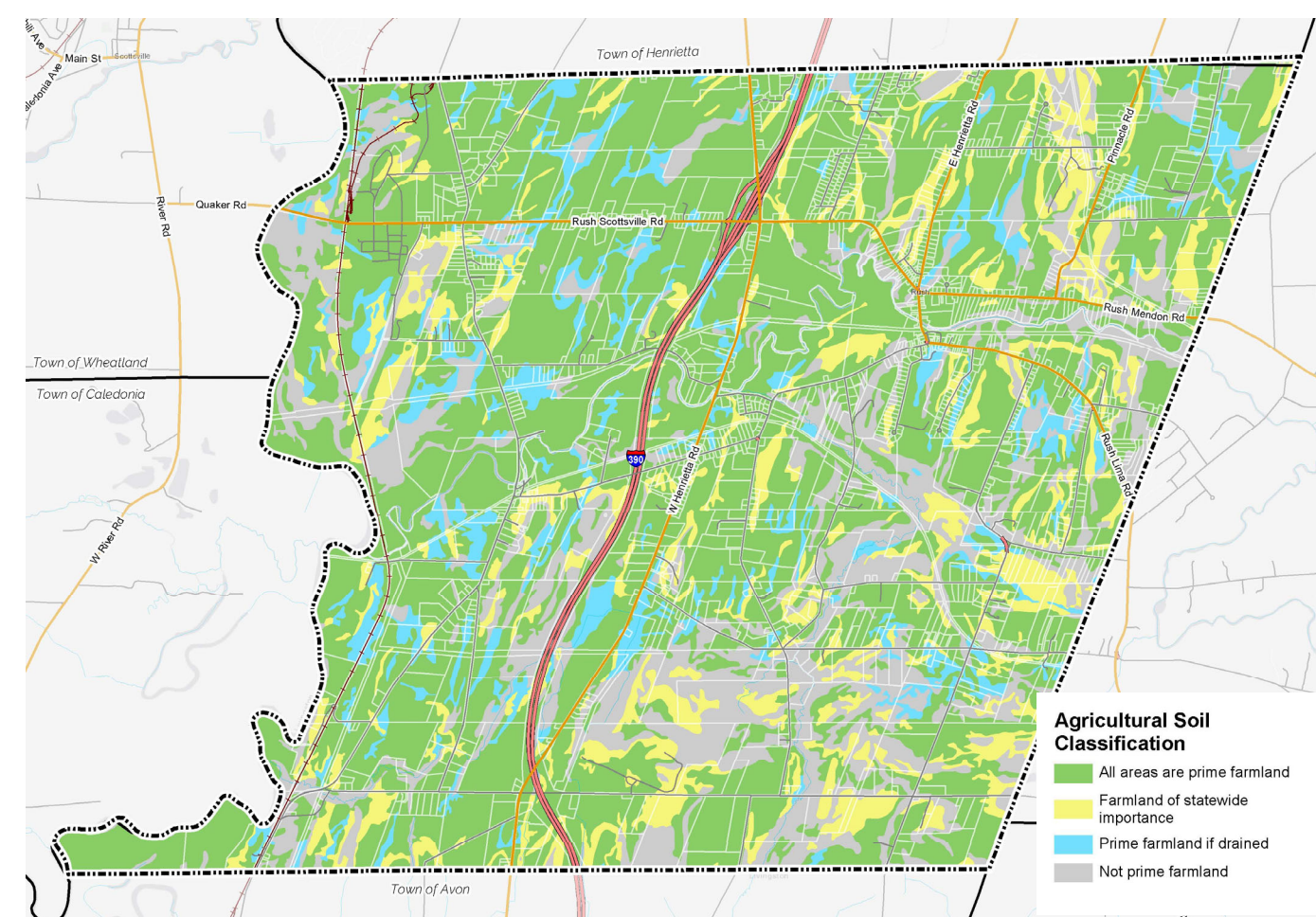
Land in NYS-Certified Agricultural Districts



Land Protected through Conservation Easements



Agricultural Soil Classification



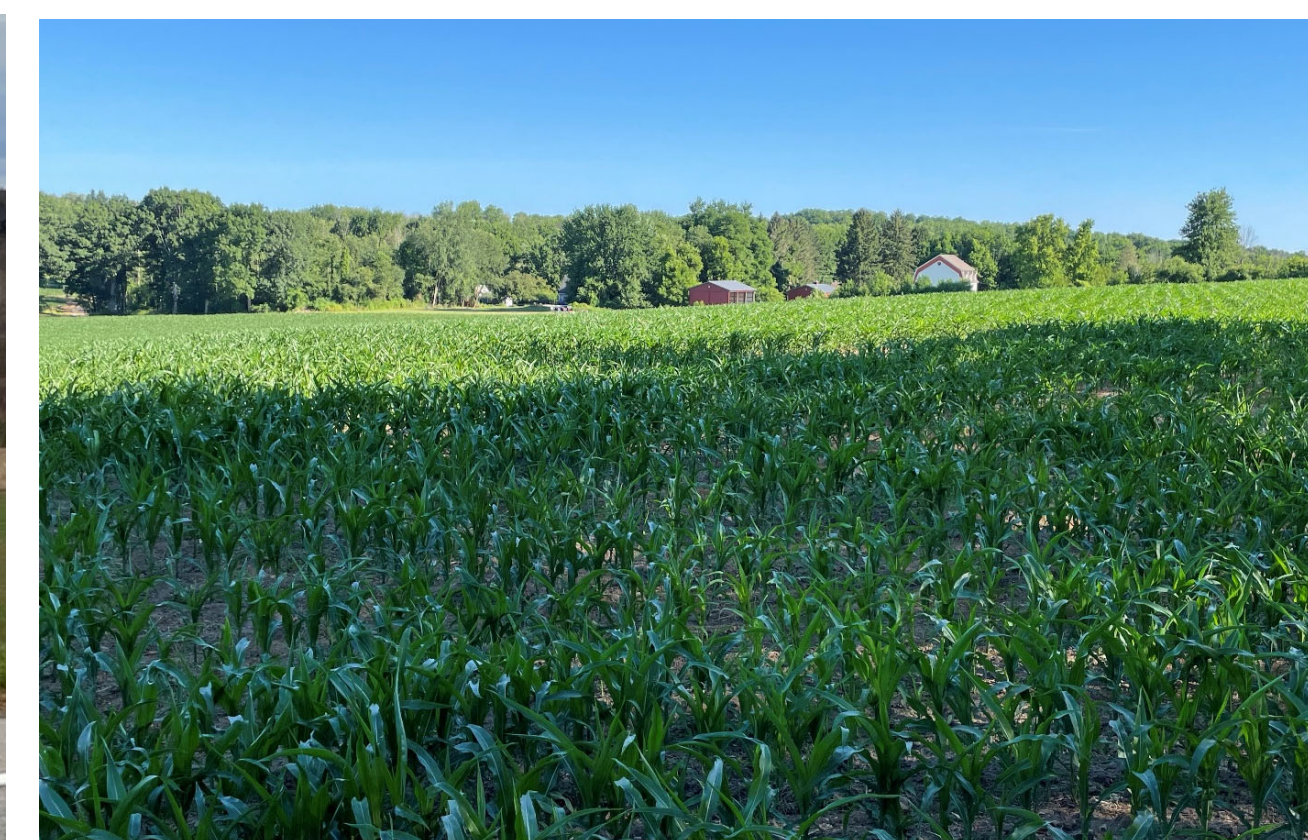
Comprehensive Plan Goals and Strategies

Goals: *Maintain the economic viability of farms.
Retain prime farmland for agricultural use.*



Strategies:

1. Encourage voluntary preservation of farmland for agricultural use.
2. Support agricultural businesses through farm-friendly zoning and infrastructure policies.
3. Increase public understanding and appreciation of agriculture in Rush.
4. Encourage use of best management practices on farms to protect water quality and the environment.



Resources

Genesee Land Trust

- Works with farmland owners to permanently preserve land through donated conservation easements or purchase of development rights.

Monroe County Agricultural & Farmland Protection Board

- County Agricultural & Farmland Protection Plan to be updated 2023-2024
- Agricultural District Program – Open Enrollment in March

Monroe County Soil & Water Conservation District

- Assists farms with planning and implementing best management practices
- Technical assistance to landowners to manage stormwater runoff and preserve and restore streams, woodlands and wildlife habitat.

Cornell Cooperative Extension of Monroe County

- Local Food guide lists farm markets, CSAs and U-pick operations
- Technical assistance for farmers